



Product Information Management (PIM) for the automotive aftermarket

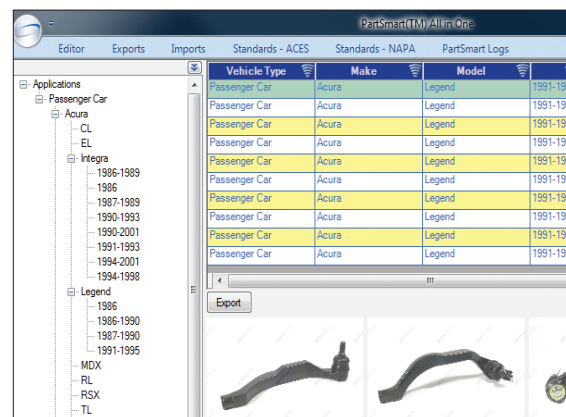
Used by automotive aftermarket companies worldwide, PartSmart™ All-in-One seamlessly integrates parts management, pricing, cataloging, and data synchronization into one easy-to-use system

One database. One source to edit, map, and publish your parts data in a variety of formats — from print to Web to CD to DVD. That's what PartSmart All-in-One delivers to the leaders of the automotive aftermarket.

PartSmart is a complete Product Information Management (PIM) solution that allows manufacturers, distributors and retailers to exchange and manage accurate, standardized product information (including product images, documents and pricing data) through the entire supply chain.

Unlike product information management systems that require you to reformat to fit their software, PartSmart All-in-One gives you convenient, powerful tools to manage your data your way, fitting your IT infrastructure and business culture.

Available in Professional and Enterprise editions to suit the respective needs of small business aftermarket parts manufacturers or large enterprise customers, PartSmart is backed by Innovative Logic's response-driven team of North American



One database. One source to edit, map, and publish parts information over the entire product life cycle

data management professionals — a team with more than 50 years of experience in the automotive aftermarket industry.

An easy download, PartSmart All-in-One is a full-featured Product Information Management (PIM) system built to manage parts information over the entire product life cycle.

To learn more, call the Innovative Logic team now at 1-613-284-0647, or turn the page to discover more about PartSmart All-in-One's features and benefits.

More...

PartSmart All-in-One features and benefits

You can edit, publish and distribute directly from PartSmart. PartSmart contains linked modules that allow you to edit and automatically publish applications, part specifications, interchange/cross reference, pricing and more — all with full support for ACES and NAPA mapping and export.

Powerful editing and fitment tools

Manage your product lines better with PartSmart All-in-One. Powerful editing tools allow you to add, delete and change product classification and attribute data. For example, when a product is deleted or superseded, this change cascades to every place the part appears in your unified database. You can also aggregate, format and create part-to-model associations and assemblies (kit relationships) of your aftermarket parts accessories and data.

PartSmart fitment capabilities include: support for any number of parametric feature and option sets on a particular item; management of make, descriptions, model year applications, pricing, specifications, images and more.

Advanced search

As well as organizing your product data, PartSmart All-in-One provides advanced search capabilities so you can easily find and modify related parts items. Changes happen in real-time and you can search them immediately.

Create custom catalogs fast

PartSmart gives you convenient, powerful tools to publish your catalogs your way, ensuring your brand integrity and existing layouts remain intact. All departments can distribute product data directly from the unified PartSmart database in real time.

Multiple reports and exports

PartSmart allows you to create multiple reports, including Product Holes Report, Interchange Holes Report and OE Holes Report. Plus, you can add optional reports working with Innovative Logic's PartSmart Services Team.

There are 6 default import/export files which allow you to import or export your entire set of data as tab delimited text files, offering easy communication with other systems.

PartSmart All-in-One's editing tools have made it possible for me to visually see my part relationships and specifications quickly. This allows for faster part updates. Also, the fact that there is only one data source ensures that my updates are seen by everyone. This saves us a considerable amount of time and effort.

Darlene Alden, Sr. Cataloger
Arvin Meritor Commercial Vehicle Aftermarket

The import/export types are Part List (category and description included), Part Attribute List, Part Pricing (multiple levels), Part Images, Applications and Cross references (OE, brand, competitor, etc.).

Multiple mapping capabilities

Efficient, accurate data mapping is the lifeblood of PartSmart All-in-One. You can easily map your parts data to NAPA and AIAA standards, and PartSmart's intuitive mapping tools help you map your data faster than ever before. For ACES data you can validate your mapping in real-time, export ACES XML files, export a legacy AIAA files, and export a PIES file.

For NAPA data, you can validate your mapping as you map and you can export a NAPA file.

Based on the latest technology

PartSmart uses the latest technology to manage your parts data. The product is based on Microsoft's .Net Framework and an XML-based publishing system allows you to print faster than ever before.

Contact Innovative Logic

To get your product information management project started, call Innovative Logic today at 1-613-284-0647 or email info@innovativelogic.com.

Visit www.innovativelogic.com for more information on our product and services offerings.